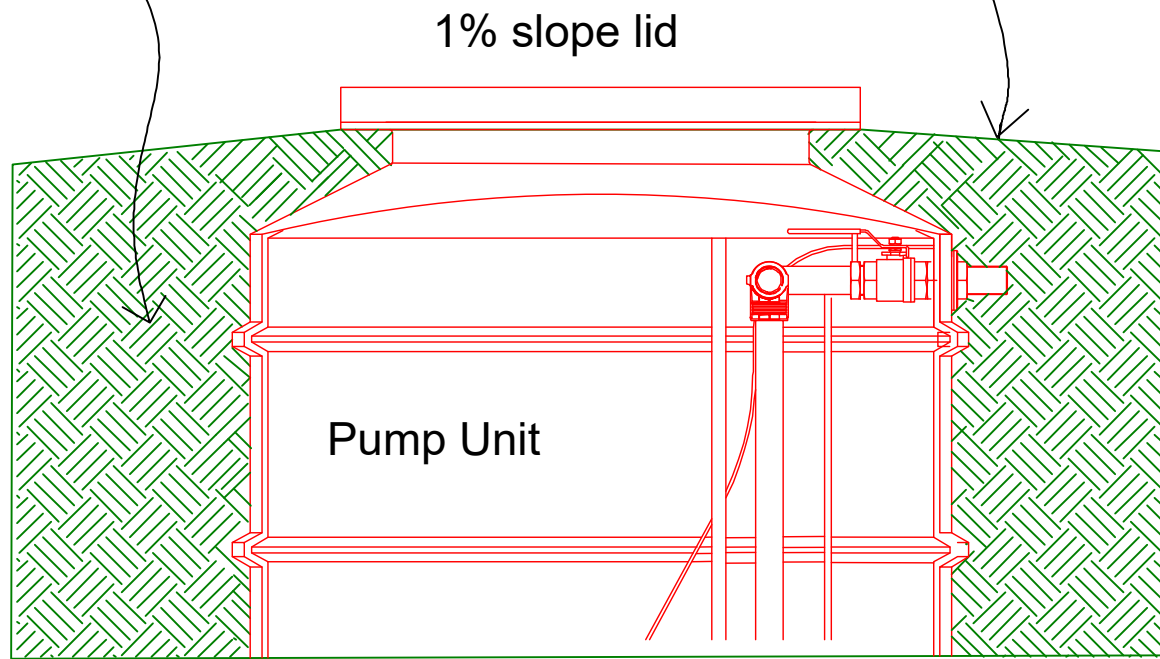


LID DETAILS

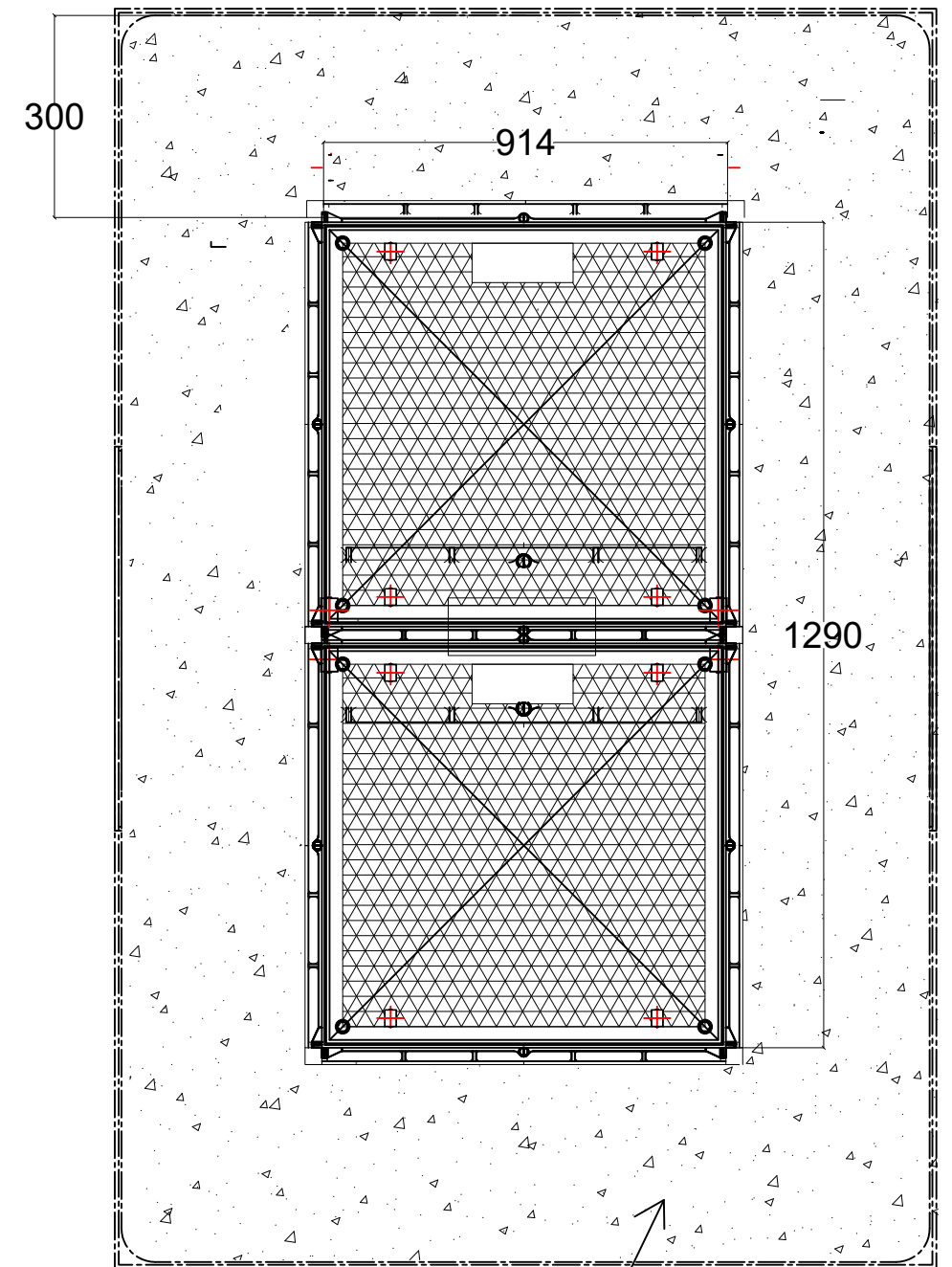
Primary Material	DUCTILE IRON
Number of Parts	2
Load Class	D
Clear Opening	914MM X 1290MM

Native Backfill as per Manufacturer's Specifications

Ground to slope away from PU lid



high concrete plinth surround



Concrete Plinth Surround
25 mPa strength

BY	DATE	REV	DESCRIPTIONS	DATE	APPROV
DESIGNED:	FM				
DRAWN:	FM				
DSGN CHECKED:	-				
DWG CHECKED:	-				
APPROVED:	-				

PROJECT TITLE:

APIA PRESSURE SEWER CHAMBERS RECTIFICATION WORKS PHASE 2 - DOUBLE LID DETAILS

SAMOA WATER AUTHORITY
Level 2 TAITTE
Building
Apia, Sogi
Ph: +685 20409
Fax: +685 21298



SIZE A3	CONTRACT NUMBER: SWA-WW2W/2023	REVISION 1
SCALE: NTS	DRAWING NUMBER: WW2W - 002	